

Intelligent Interactive Interface

Automatic In-Rip Trapping/Interactive Trapping



www.trapping.org

I-Trap™

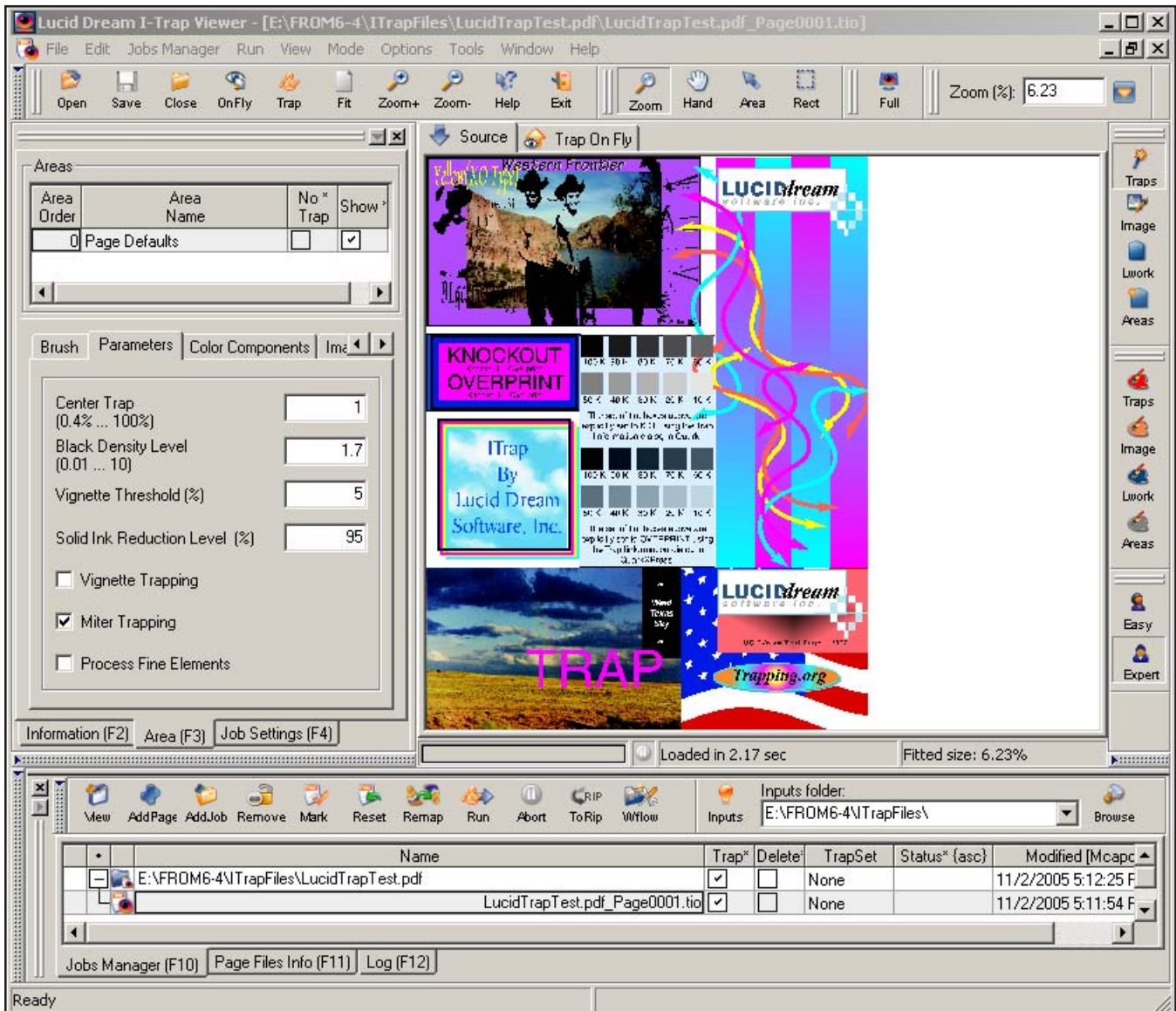
Panels, Toolbars, Menus and Tabs.

I-Trap version 3.0

Revised: December, 2006

Panels, Toolbars, Menus and Tabs.

There are three main panels in the Viewer work area.



Viewer overview

The **Page Display** panel includes two tabs - Source and Trap On Fly. When a page is opened in the Viewer, its source view shows in the source window. You can split the display window to view source and trap on fly synchronously at the same time.

The **Left Information** panel has three tabs - Information, Area, and Job Settings. The panel is used to examine page values and to edit page-trapping parameters.

Panels, toolbars, menus and tabs. Changing the layout.

The **Bottom Information** panel includes three tabs - Jobs manager, Page File Info, and Log. This panel is used to select pages to work with interactively. The log window displays all operations and error messages. These messages are copied to the log file created in the Viewer working directory. The user is encouraged to collect this file and send it to the support team when problems occur.

The panels are supplied with the shortcut keys (see the list in the Appendix). A set of toolbars provides for quick access to the main commands. Toolbar icons are supplied with tool tips. You can arrange the toolbars around the display panels or hide them.

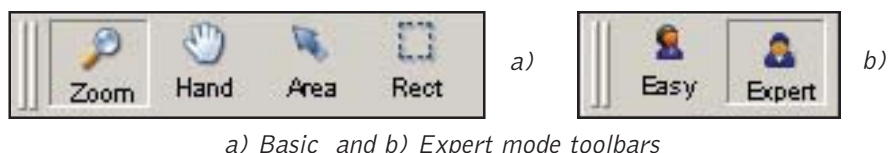


Standard toolbar

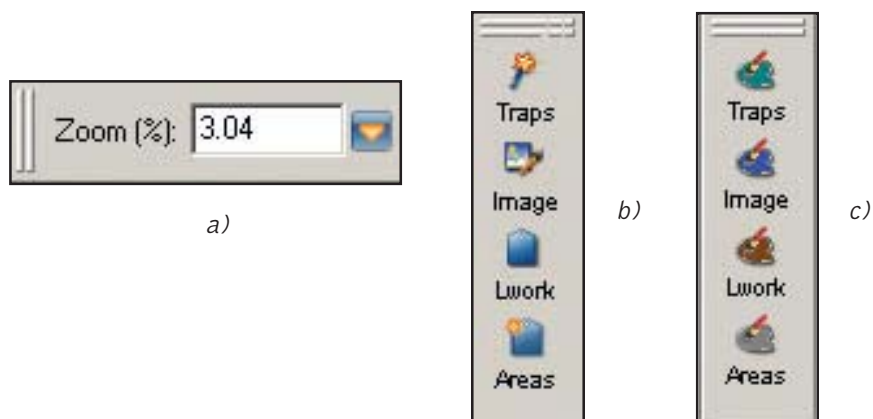
The list of the **standard toolbar** commands includes:

- **Open Page**, which means a corresponding page (actually, its TIO file) should be opened in the source view panel and its trap instruction object is available for editing trapping parameters. The TIO file can also be opened from the Jobs manager window.
- If you are trying to access a page of the job with more than 16 inks the job will be opened in the **Ink Reamapping Tool** and not displayed in the Display panel. You cannot trap a page with more than 16 inks and have to reduce inks count.
- **Save Page**
- **Close current Page**
- **Trap selection On-Fly and preview results** applies traps to a selection in the source view panel and immediately shows the result in the Trap On Fly window.
- **Trap (save trapping)** applies traps using current trapping parameters to the source data and saves the results to a file in a specified format (see stand-alone workflow definition).
- **Fit** displays a full-size page fitting into the window.
- **Zoom in** (or double-click on the source preview, or select the rectangular area with the mouse inside the view panel).
- **Zoom out** (right click inside the view panel).
- **Help** changes the cursor to a question mark and lets you click an element for help.
- **Exit**

Panels, toolbars, menus and tabs. Changing the layout.



The **basic toolbar** commands include **Zoom**, and **Hand** tools. Use shortcut **Ctrl-M** to switch to the Zoom tool, **Ctrl-H** to switch to the Hand tool. **Expert mode toolbar** contains buttons to switch between easy and expert mode of defining trapping parameters. In easy mode most of the parameters are used from the settings done in the Rip plug-in, predefined TrapSet or set by default. Easy mode is perfect for the novice. In expert mode you can create and save your own TrapSets, change ink based, image and other trapping parameters. Expert mode is ideal if you want to experiment with resulting traps, to learn how to control trapping and clearly know what impact on trapping results you want to achieve.



Zoom (a), Highlight mode (b) and Highlight colors selection (c) toolbars

The **zoom toolbar** contains **Zoom factor** drop down menu.

Highlight mode toolbar contains the buttons to switch the corresponding highlight modes **On** and **Off**. Pressing any of the four buttons you can enable highlighting of the page display elements to help examine the source and trapped data.

Highlight colors selection toolbar is used to select the highlighting colors for different highlight modes. The palettes on the buttons are painted with the color selected for highlighting traps, images, line work data and trap areas.

Most **menus** are traditional and self-explanatory. The menus described below

Panels, toolbars, menus and tabs. Changing the layout.

have some specific functionality.

Menu **/File/Open TrapSet as Page** is used to edit TrapSets, which are pre-defined TIO files in a specific shared folder (by default the installer would suggest the name ITrapShared).

Menu **/File/Imports...** is used to select *.sum file which is the control file created by ArtQuest Crescendo OEM Rips workflow, and build the TIO based on the source page data generated from the files.

Menu **/Edit** relates to work with trap areas defined in the Viewer. Its features are covered in the section “Creating and editing traps areas and parameters” further in this manual.

Menu **/Jobs manager** duplicates the toolbar in the Jobs manager tab. Open a selected page and trap pages selected in the Jobs manager window table.

Menu **/Jobs manager/Add page(s)** opens standard File dialog to select a set of TIO files to be added to the Jobs manager window.

Menu **/Jobs manager/Add current page** adds the TIO of the current page to the Jobs manager window.

Menu **/Jobs manager/Open Selected Page(s)** adds pages and jobs to the Jobs manager using a custom dialog.

Menu **/Jobs manager/Remove Selected Page(s)** deletes pages from the Jobs manager.

Menu **/Jobs manager/Edit Job Workflow** calls the dialog, where you can add, modify and delete the output plug-ins generating different output formats. The plug-ins settings can be edited for the current page using this dialog. This is a powerful capability of applying different parameters to different pages (jobs) when generating output formats.

Panels, toolbars, menus and tabs. Changing the layout.

Menu **/Jobs manager/TrapPage(s) Silent** enables trapping of the pages marked for trapping and sends the fully trapped jobs to the RIP.

Menu **/Jobs manager/Send to RIP** sends to RIP those jobs, which were trapped per page, or in which there were trapping problems encountered.

Menu **/Jobs manager/Mark Page(s) as 'Ready for Trapping'** is used on an un-licensed Viewer when you wish to save all changes to trapping parameters and set the page's status to 'Ready for Trapping', which would instruct the licensed Viewer to trap this job.

Menu **/Jobs manager/Reset Page(s) Status** is used if you wish to re-trap an already trapped job.

Menu **/Jobs manager/Remap Links in Job** starts the InkRemapping Tool for a page (job) selected in the Jobs manager window.

Menu **/Jobs manager/Start inputs** starts/stops monitoring the watch folder that can be defined in the **/Options/Preferences.../Workflow** dialog.

Menu **/Run** duplicates the **OnFly** and **Trap (save trapped data)** toolbar buttons.

Menu **/View** contains the options that help arrange display windows, toolbars and view source and trapped data in a convenient way to compare the traps color and position. The Figure shows the menu selections most of which appear with a check mark that indicates the option to be switched *On*. You can show/hide the toolbars, the left information panel and the Jobs manager panel. When **Show split Trap-On-Fly (Ctrl-P)** is enabled either vertically or horizontally the Traps are shown together with the source page at the right or bottom parts of the display window. When you are moving the cursor in the source page view the 1st and 2nd columns of the Extended Color Info table show the source color and the 3d column shows the traps color at the current position.

Panels, toolbars, menus and tabs. Changing the layout.

View	Mode	Options	Tools	Window	Help
<input checked="" type="checkbox"/>					
<input checked="" type="checkbox"/>					
<input checked="" type="checkbox"/>					
<input checked="" type="checkbox"/>					
<input checked="" type="checkbox"/>					
<input checked="" type="checkbox"/>					
<input checked="" type="checkbox"/>					
<input checked="" type="checkbox"/>					
				Ctrl-G	
				Ctrl-NumPad /	
				Ctrl-NumPad +	
				Ctrl-NumPad -	
				Ctrl-NumPad *	
<input checked="" type="checkbox"/>				Ctrl-P	
<input checked="" type="checkbox"/>					
<input type="radio"/>				Ctrl-F5	
				Ctrl-F6	
				Ctrl-F7	
				Ctrl-F8	
				Ctrl-F12	
				Ctrl-R	

a) View menu

Mode	Options	Tools	Window	Help
<input type="radio"/>				Ctrl-M
				Ctrl-H
				Ctrl-A
				Ctrl-E
<input checked="" type="checkbox"/>				
<input type="radio"/>				
<input type="radio"/>				

b) Mode menu

The *Show grid* option (toggle by **Ctrl-G**) is handy when you want to examine the placement of traps compared to the source objects. The grid size and line properties are adjusted in the */Options/Preferences* dialog.

Panels, toolbars, menus and tabs. Changing the layout.

Menu **/Mode** allows to control the display and highlight modes of the Viewer and to switch the Easy and Expert presentation of the trapping parameters. You can use this menu to switch modes if the toolbars are hidden.

Show memorized color is handy when you want to compare the special point color to some surrounding values. To do so use the combination of **Ctrl + Left** mouse button click and the color value of the position under cursor will be displayed in the 3d column of the Extended Color Info table (LW/CT light blue color header) on the Information panel. While you move around this value stays unchanged and can be easily compared to the current color values. 3d column shows the traps color at the current position. The **Show color synchronously** option is handy if you are examining the traps in a split display window.

Options	Tools	Window	Help
Color Look-Up Table		Ctrl-Shift-L	
Trapping Highlight Color			
Image Highlight Color			
Linework Highlight Color			
Inactive Areas Highlight Color			
Plugins Information		Ctrl-Shift-I	
Preferences...		Ctrl-Shift-P	

Options menu

Menu **/Options/Color look-up table** calls an editing tool for spot inks CMYK equivalents – instead of entering the values into tables. The functionality is described below in the job parameters definition section.

Menu **/Options/...Highlight Color** can be used to call standard color selection dialogs to choose highlight colors for different parts of the page.

Menu **/Options/Plug-ins information** opens the window with the existing plug-ins in the I-Trap™ subdirectory. The Figure below shows plug-ins

Panels, toolbars, menus and tabs. Changing the layout.

Plugins Information						
Plugin Name	Version	Status	Plugin Configuration	Module Name	Type	Vendor
DELTAPL.DLL	1.5.02/02/2005	Ok	Not Supported	E:\I-Trap\Win203\Plugins\DELTAPL.dll	Output	LucidDream
FITRAP	1.5.0.7 (07/22/2005)	Error: FITR/	Not Supported	E:\I-Trap\Win203\Plugins\fitrap.dll	Output	LucidDream
ITRAP	1.5.5.7 (10/21/2005)	Ok	Not Supported	E:\I-Trap\Win203\Plugins\itrap.dll	Output	LucidDream
JPEG	1.5.0.2 (09/06/2005)	Ok	Configure	E:\I-Trap\Win203\Plugins\jpeg.dll	Output	LucidDream
I-TONE	1.5.11/22/2004	Ok	Configure	E:\I-Trap\Win203\Plugins\SCREENPL.dll	Output	LucidDream

Plugins information box

information table where the status column determines whether the module can be used by the current I-Trap™ version or not.

The plug-in status column shows any problems that can occur if the plug-in version does not match the Viewer interface version.

The Plug-in Configuration column indicates if the plug-in has its own configuration dialog. In such case the button is available to call this dialog and set the parameters for this plug-in. Configuration is also available from the OUT dialog of the Job Settings panel.

Menu */Options/Preferences* calls the dialog to tune the look and feel of the Viewer windows and behavior. The “Viewer preferences” section describes possible options.

Menu */Tools/Graphical Configuration Tool* calls an editing tool for the color component parameters values and Color Table inks CMYK equivalents – instead of entering the values into tables. The functionality is described below in the trapping parameters definition section.

Menu */Tools/TIO Creation Wizard...* calls the wizard creating the TIO files for standalone work as described in the section “Working with the Viewer in a Stand-alone Mode” further in this chapter.

Menu */Tools/Trapping Queues Setup...* calls the dialog that helps you configure your rip queues for automatic and interactive trapping. It is described in the section “Trapping queues configuration tool” further in this Chapter.

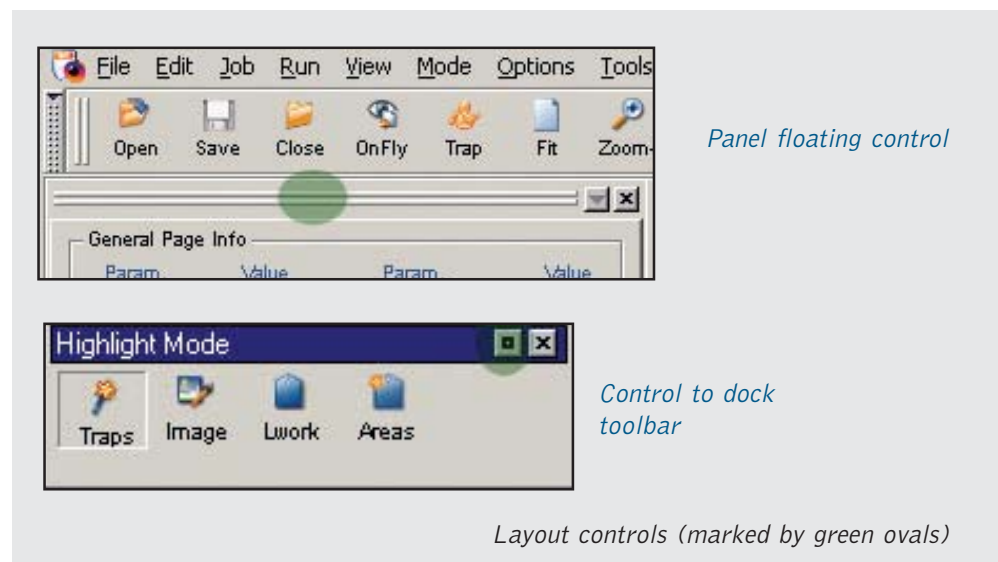
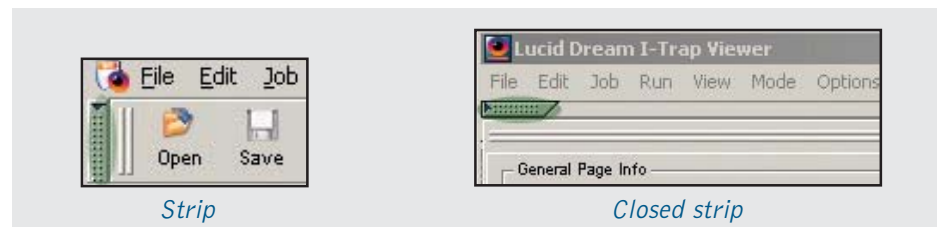
Panels, toolbars, menus and tabs. Changing the layout.

Menu **/Tools/Trapping Queues Update...** calls the dialog, where you can update the trapping queues created for I-Trap v.2.2.x to the format of version 3.

Note! If you do not update or re-create your trapping queues then the Rip error will be generated on trapping jobs.

Menu **/Tools/Activate Dongle** calls the dialog where you can enter the dongle activation codes and enable full version instead of the demo mode.

You can change the application layout if you want more space for the display windows or more information present at once on screen. To quickly show/hide the panels right-click on one of the colored strips near the panels and the toolbar, as shown in the Figure below. A closed panel also opens when you press the corresponding hotkey.



The width of the panels is resizable, and the height parameter is resizable and adjusted automatically according to the screen resolution. Panels can be **Floated/unfloated** which means that you can drag them by the two lines

Panels, toolbars, menus and tabs. Changing the layout.

present in every panel, as shown in the Figure. Use the **X** button near these lines to close the panel. Use the small round button to return the floated panel or toolbar to its docked position.

Ctrl-F12 key toggles full screen layout for the I-Trap™ Viewer window.